

St Anne's Board Mill – Mill Sale Brochure 1980

SALE PLANT AND MACHINERY

By St. Anne's Board Mill Company Limited, Bristol, England

"St. Anne's Board Mill has a high reputation as a board maker and also as being responsible for many innovations, such as the Inverform, which have benefitted the industry throughout the world."*

*From the journal 'Paper Technology and Industry', September, 1980.

This brochure provides only a brief glimpse of the wide range of board making and finishing plant, machinery and services, maintained to the highest of standards, which equipped a fully operational mill making 80,000 tonnes of carton board per annum.

St. Anne's has a competent team of people available to give far-reaching assistance in helping to ensure the successful relocation of the complete range of plant and machinery.

All items are available now.

For further information or to make arrangements to view please contact:
Chris Sampson or John Roberts.

Telephone Numbers: Bristol (0272) 779861, 776099 or 776090 or telex 44279 BOARDS G.



St Anne's Board Mill – Mill Sale Brochure 1980

No. 4 MACHINE

Inverform Sections. ▶
Champflex Coating Section. ▼



No. 6 CUTTER

Zerand Unwind/Splicing
Masson DR3A ▶
Cutter Controls ▶
Layboy Controls ▶

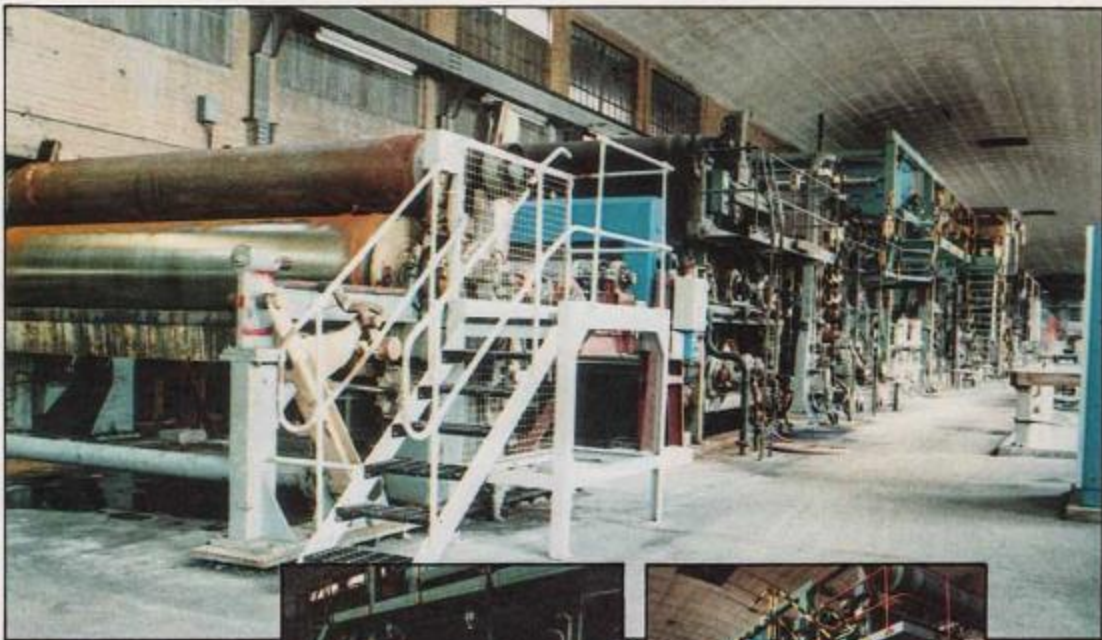


St Anne's Board Mill – Mill Sale Brochure 1980

No. 6 MACHINE



- ▲ General view Wet End
- ◀ SABM Mk II Former
- ▼ General view Dry End



Voith/Cellier ▶
Coating Section

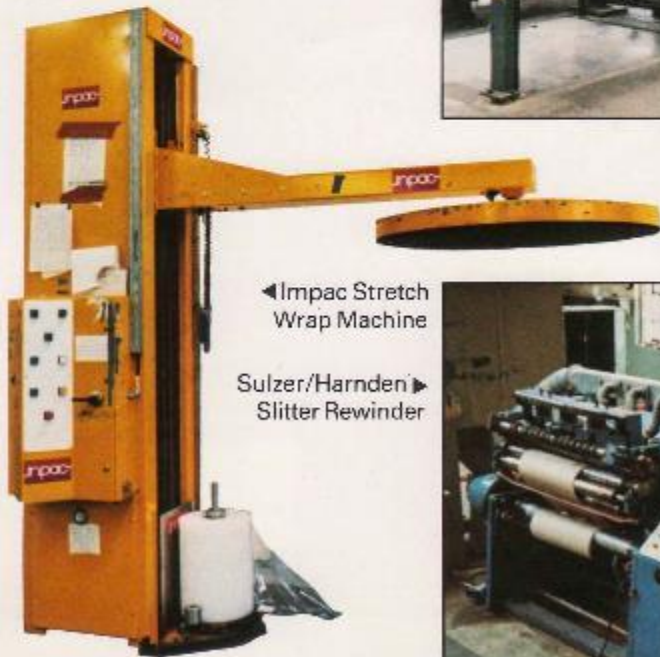


No. 14 CUTTER



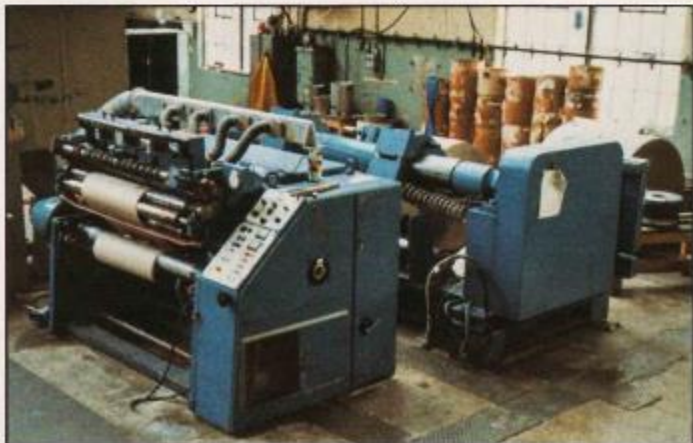
Bone/Markham Unwind ▶

Strachan & Henshaw 1300 Supertrim ▶



◀ Impac Stretch
Wrap Machine

Sulzer/Harnden ▶
Slitter Rewinder



FINISHING UNITS

St Anne's Board Mill – Mill Sale Brochure 1980

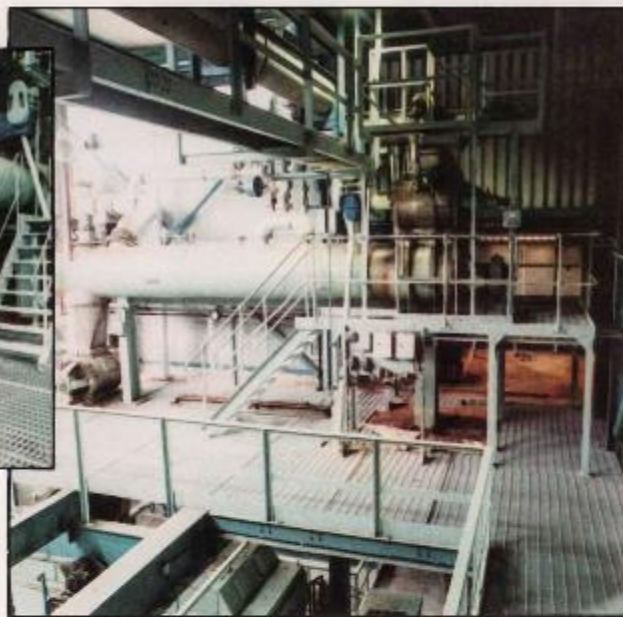
T.M.P. MILL



Main Refiner from Control Room ▶
Pre heater floor ▶



▲ Pre heater floor



▼ Chip Silos and T.M.P. House



St Anne's Board Mill – Mill Sale Brochure 1980

BOARD MACHINE No.6 (WALMSLEY)

Trim width: 3660 mm
 Capacity: 4.5 tonnes/hour, 250 – 700 microns
 Speed range: 39 – 122 m/min.
 Wet end: six S.A.B.M. Formers 1978
 Coating: Voith/Cellier 1980
 Drive: Lineshaft single motor D.C. Solid state 1978

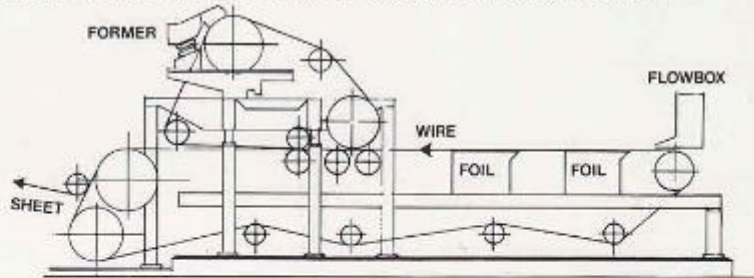
BOARD MACHINE No.5 (WALMSLEY)

Details as for No. 6 Machine
 Wet end: six S.A.B.M. Formers 1977
 Steam system: Reiss Thermo Compressor 1978
 Drive: Lineshaft single motor D.C. Solid state 1975/80

BOARD MACHINE No.4 (WALMSLEY)

Trim width: 2900 mm
 Capacity: 9.0 tonnes/hour, 275 – 600 microns
 Speed range: 90 – 220 m/min.
 Wet end: 4 Inverform Units 1961. 1 S.A.B.M. Suction Former 1980
 Winder: Masson Scott U3 1980

"Alternatively we can arrange for a modification to replace the 4 Inverform units with a conventional Head box providing a versatile 2-ply machine".



MECHANICAL PULPING PLANT

Barking and Chipping: Rauma Repola 1968
 R.M.P.: Four Bauer/Sund 412 Refiners. Output 70 tonnes/day 1968
 T.M.P.: One Sund RS 1300 Refiner 1979. Output 65 tonnes/day including Hydrogen Peroxide Bleach Plant.

FINISHING EQUIPMENT

CUTTERS

No.2 Masson Scott	BQ2 Duplex	3760 mm	1955
(Sold) No. 3 Masson Scott	DR4A	2390 mm	1967
(Sold) No. 4 Jagenberg	EQSM/GL Syncro	2800 mm	1967
No. 5 Jagenberg	RQ/GL Syncro	1400 mm	1972
No. 6 Masson Scott	DR3A	1700 mm	1974
(Sold) No. 11 Jagenberg	RQ/GL Syncro	1800 mm	1968
No. 12 Masson Scott	DR4A	1700 mm	1969
No. 13 Masson Scott	LQ Simplex	1470 mm	1958
No. 14 Strachan & Henshaw	1300	1300 mm	1977

Nos. 5, 6 and 14 Cutters include full inspection and automatic reject, Nos. 5 and 6 also have Zerand flying splice equipment.

SLITTERS

No. 1 Masson Scott	U1A	1270 mm	1974
(Sold) No. 10 Masson Scott	U1A	1270 mm	1973
No. 11 Sulzer Harnden	B71	1320 mm	1977

GENERAL

Services include a 27 mw Power Station, Water Supply and Effluent Treatment Plants.

A wide range of ancilliary equipment is available including: Refiners Screens and Mixers Chests and S.S. Tanks Pumps Motors Switch gear and Transformers.

Details available on request.